

MURFREESBORO ELECTRIC

DEPARTMENT

615-893-5514

Date:	# of pages:
To:	From:
Co/Dept.:	Co/Dept.:
Phone #:	Phone #:
Fax #:	Fax #:

Underground Temporary Service

2 x 6 Minimum. Brace in two directions, minimum of 4' from meter base board.

At least one weatherproof switch with ground fault interrupter circuit breakers on 15, 20 & 30 amp circuits

Meter Base

Schedule 80 PVC conduit to extend to 6" from base of pole

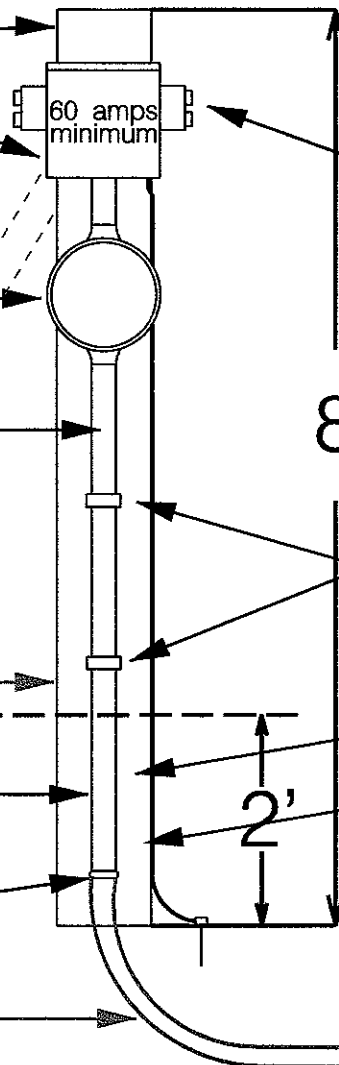
1 of 2 Braces (90 degrees apart)

Ground Line

Conduit must be minimum of 12" below grade

Bushing

Flex conduit, minimum of 3' length



At least one weatherproof outlet box

8'

Galvanized conduit straps held with screws

Base to be a maximum of 2' away from transformer or vault

#6 Bare copper ground wire attached to driven ground rod

All leads of URD type wire and ground wire to extend a minimum of 4' from end of conduit.

2'

Must have current electrical inspection to be connected by MED.

Have engineer to spot location on site for temporary service and permanent meter location. Temporary should be within 2' of transformer or vault.

Install board next to transformer if transformer & vault are at same location.

National Electric Code will be final authority